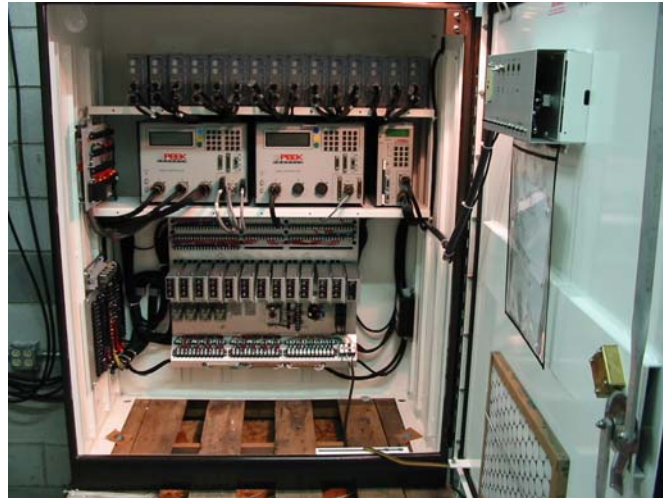


NEMA TS1 CABINET



CONSTRUCTION

- ◆ Wapiti Micro Systems builds high quality NEMA cabinets, which conform to the latest National Electrical Manufacturer's Association (NEMA) Standards Publication TS 2-2003. Available in both TS1 and TS2, our cabinets utilize a modular design and special Plug-N-Go wiring harnesses to allow for quick replacement. Cabinets and backpanels come in a variety of sizes and configurations making the TCP cabinet the perfect choice for any situation. Our strict testing procedure insures high quality and increased reliability.

CABINET

- ◆ Sizes—see 2nd page OPTIONS for available sizes
- ◆ The enclosure has a sloped top to prevent water accumulation.
- ◆ The door has a louvered vent with retainer for a removable filter. Disposable paper filters are provided. Provision is made for a forced air ventilation system, vented through the roof overhang. A thermostatically controlled forced air ventilation system is available as an option.
- ◆ For interior flexibility, the enclosure is equipped with two "C" mounting channels on both side walls and on the rear wall for mounting shelves or panels. Channels are adjustable and can be placed in any position front to back, or along the rear wall.
- ◆ The enclosure door opening is double flanged on all four sides. This feature not only provides additional strength, but prevents dirt and liquids from dropping into the enclosure when the door is opened.
- ◆ All surfaces, edges, and openings are smooth and burr-free for worker safety and equipment protection.
- ◆ Standard enclosures are provided with a smooth and uniform, natural aluminum finish.

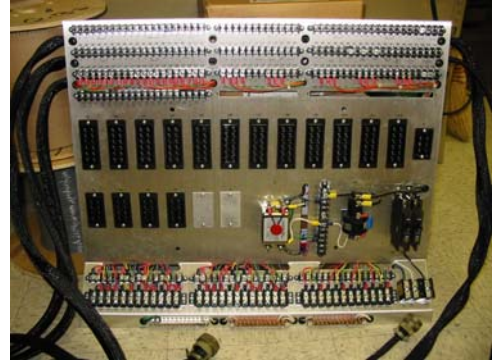
DOORS

- ◆ The cabinet is designed so that the leaves of the hinges are not exposed, making the hinges tamper-proof and presenting a neat and clean appearance. The cabinet door is attached to the body of the enclosure by means of a continuous 0.075" stainless steel piano-type hinge on the right side. It is riveted to the door with 0.25" stainless steel rivets and bolted to the cabinet with 1/4-20 stainless steel carriage bolts and Nylock nuts. Further, the 0.25" stainless steel hinge pin is welded top and bottom to prevent tampering.
- ◆ The door is sealed with a closed cell neoprene gasket bonded to the inside of the door with an oil resistant adhesive.
- ◆ The three point latching mechanism is designed with a heavy duty 3/4" stainless steel handle.
- ◆ The door lock is Corbin #1548-1 or equivalent lock with two keys is standard.

NEMA TS1 Cabinet

TS1 BACKPANEL (4, 8, 12, 16 Position Configurations)

- Loadswitch sockets
- 2 Flasher sockets
- 4 Flash Transfer Relay sockets (+2 optional sockets)
- 2 Circuit Breakers
- 30 Amp Line Filter
- Mercury Contactor
- 18 Gauge PVC Jacketed Wire
- 2 Copper buss bars
- 1 aluminum buss bar



MAINTENANCE PANEL + POLICE PANEL



- Power ON/OFF Switch
- Stop Time ON/OFF Switch
- 8 Vehicle Test Switches
- 4 Pedestrian Test Switches
- GFI Outlet
- Convenient Molex Connector for Backpanel Connection
- Signal ON/OFF Switch
- Flash/Auto Switch
- Manual ON/OFF Switch



OPTIONS

- Fluorescent Light, Snake Light
- Detector Rack
- Adapter Cable for TS2 type 1 controllers
- System Interconnect Panel
- Preemption Panel
- Surface Mount Generator Socket
- External Generator Housing w/ socket
- GPS Time Sync
- UPS (Uninterruptible Power Supply)
- Riser Base, Split Riser Base, Anchor Bolts
- Plug-ins (CMU, MMU, Loadswitch, Flasher, FTR, etc)
- Backpanel Configurations:
 - 4 Position, 8 position (wired for 6 ch or 12 ch monitor)
 - 12 Position, 16 Position
- Painted Cabinets (Outside, Inside, or both)
- Standard Cabinet Sizes:
 - P44- 55" x 44" x 26"
 - P40- 55" x 40" x 26"
 - M30- 50" x 30" x 17"
 - M36- 50" x 36" x 17"
 - MSX- 58" x 30" x 17"
 - SM36- 58" x 36" x 17"
 - G- 41" x 25" x 16"
 - (other sizes available)

Option: 16 Channel Detector Rack



Optional Generator Socket

