

# Pocket View

## Closed Loop Software Designed for Pocket PC



### DESCRIPTION

Pocket View is a sophisticated closed loop software application designed for use with a hand held computer. It's a great tool for technicians or engineers that are in the field because it eliminates the need for bulky and expensive laptops. A simple cable will allow your hand held computer to communicate with all Wapiti Micro Systems Corp. controller firmware, including local/ master firmware for the 170 controller, 170HC11 controller, 170ATC controller, 2070L controller, and the PC104 controller.

The minimum hardware requirements for Pocket View are as follows:

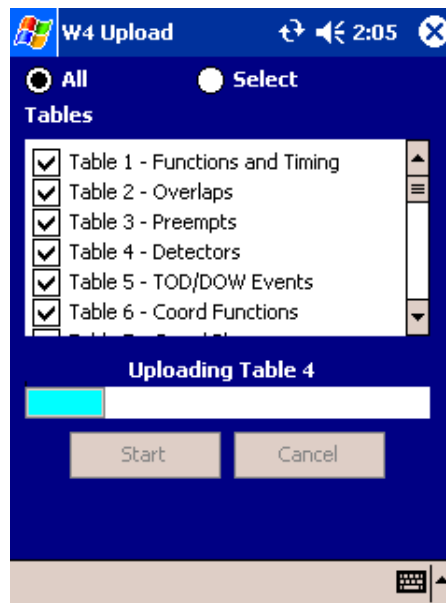
- Pocket 2002 OS or Above.
- 64M of RAM.
- Compact Flash Card Slot.
- Flash High-Speed Serial Card.

Pocket View provides most of the capabilities found in the TrafficView32 Closed Loop Systems. It has been designed to provide the standard PC based functionality in a compact field unit. Pocket View may also act as the front panel for the new ATC controller

### FEATURES

#### Upload and Download

Pocket View provides full upload and download capabilities, including the ability to compare differences between uploaded data and store data. The user may select all tables or specify the tables to upload/download



#### Timing Editor

A Timing Editor is provided for viewing and editing the timing data. The tables are spreadsheets matching the Wapiti table designations. All data entry is range checked for data validity. Data entry techniques are consistent with TrafficView32. All spreadsheets include the 170 key-strokes for locating each function in the 170 controller.

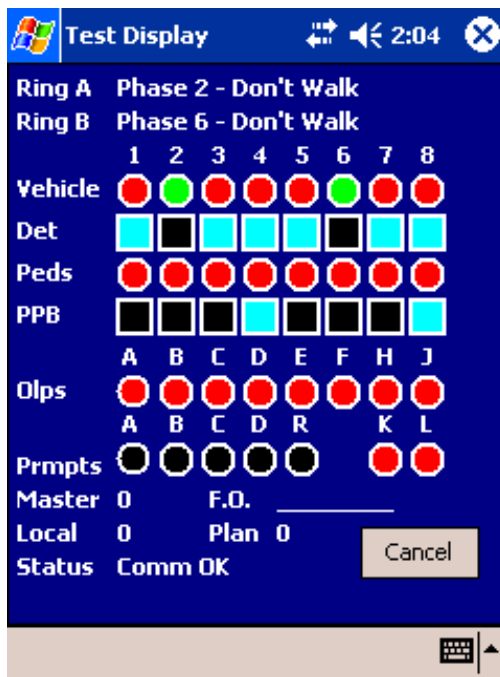


## FEATURES—CONTINUED

### Real-Time Displays

Pocket View provides several real-time displays. The first is the Test Display. This display shows phase conditions, calls, preempts, and coordination information. The second real-time display is the Comm Test. This display provides a visual indication of the communication status to the controller.

Finally, there is a Real Time Clock display that shows the current controller date and time and the Pocket PC's date and time. Options are provided for setting the controller's date and time to the Pocket PC or vice versa.



### Status

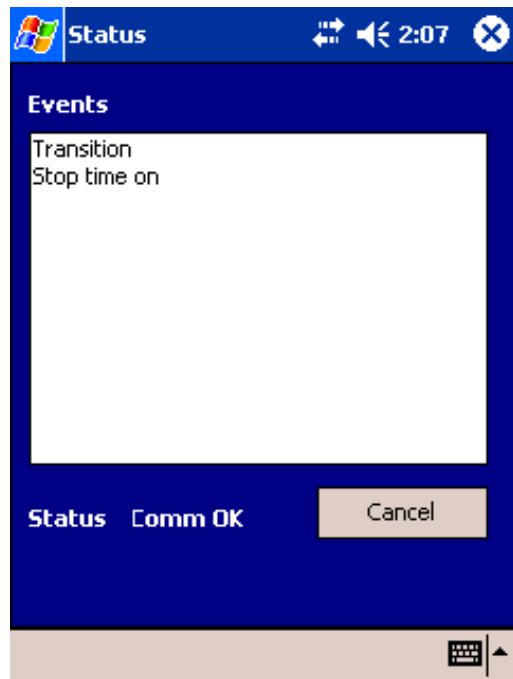
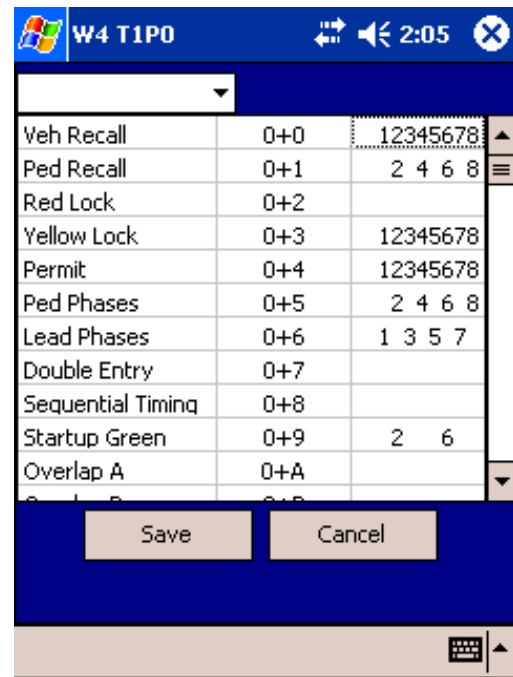
The Status Display shows the current status of the controller and includes all events and alarms as defined by Wapiti.

### Manual Commands

Manual Commands allow the operator to send any manual command to the controller. All commands defined by Wapiti are supported.

### Upload Logs

Pocket View allows the operator to upload all master and local log data. The log entries are displayed in tabular format. Uploaded log data may be saved to a comma-delimited text file.



## Wapiti Micro Systems Corp.

4565 Glenbrook Rd Willoughby, OH 44094

PH# 440-975-1167 FX# 440-951-8203

www.wapitimicrosystems.com